

# Second expert meeting of the Working Group on Marine Geospatial Information Leibniz-Institute for Baltic Sea Research Warnemünde, Rostock-Warnemünde, Germany 24 – 28 February 2020



**UN-GGIM** Agenda Item #5  
Implementing the United Nations Integrated Geospatial Information Framework  
in the Land Sector  
- the Framework for Effective Land Administration  
<http://ggim.un.org/>

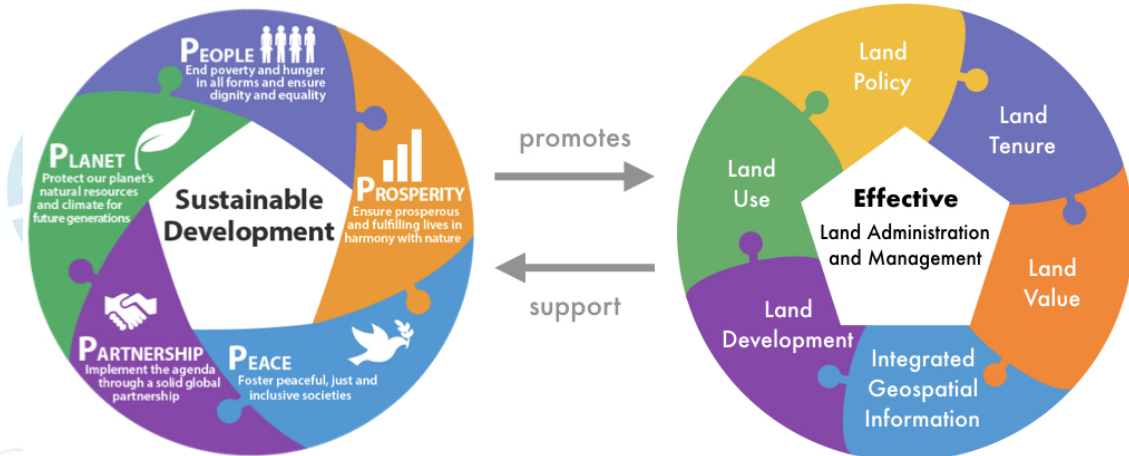


**UN-GGIM** | United Nations Committee of Experts on Global Geospatial Information Management | Working Group on Marine Geospatial Information

Positioning geospatial information to address global challenges  
**UN75** SHAPING OUR FUTURE TOGETHER 2020 AND BEYOND | [ggim.un.org](http://ggim.un.org)

1

## Land in sustainable development



**UN-GGIM** | United Nations Committee of Experts on Global Geospatial Information Management | Working Group on Marine Geospatial Information

Positioning geospatial information to address global challenges  
**UN75** SHAPING OUR FUTURE TOGETHER 2020 AND BEYOND | [ggim.un.org](http://ggim.un.org)

2

26 – 29 September 2018, Deqing, China



g Meeting of the UN-GGIM Expert Gr  
and Administration and Management  
联合国全球地理信息管理专家委员会  
土地管理专家组会议



Deqing International Seminar on UN-GGIM  
“Effective Land Administration”  
联合国有效土地管理国际研讨会



**UN-GGIM** | United Nations Committee of Experts on  
Global Geospatial Information Management

Working Group on  
Marine Geospatial Information

Positioning geospatial information to address global challenges



2020 AND BEYOND

SHAPING  
OUR  
FUTURE  
TOGETHER

ggim.un.org

3



**INTEGRATED GEOSPATIAL  
INFORMATION FRAMEWORK**  
A STRATEGIC GUIDE TO DEVELOP AND STRENGTHEN  
NATIONAL GEOSPATIAL INFORMATION MANAGEMENT  
PART 1: OVERARCHING STRATEGIC FRAMEWORK

CONTENTS

- Executive Summary ..... 3
- Introduction ..... 4
- Case for Change ..... 6
- Document Structure ..... 8
- Integrated Geospatial Information Framework ..... 9
- Vision and Mission ..... 11
- Vision ..... 11
- Mission ..... 11
- Goals ..... 12
- Significance ..... 13
- Benefits ..... 15
- Societal Benefits ..... 15
- Economic Benefits ..... 15
- Environmental Benefits ..... 15
- Drivers for Change ..... 16
- Benefits are a Key Driver for Change ..... 16
- Strategic Alignment to Global Agendas ..... 16
- Community Expectations ..... 16
- Transforming Government ..... 16
- Bridging the Digital Divide ..... 17
- Barriers to Success ..... 17
- Underpinning Principles ..... 19
- Strategic Pathways ..... 21
- Conclusion ..... 25



The diagram illustrates the Integrated Geospatial Information Framework as a 3x3 grid of interlocking puzzle pieces. The columns are labeled 'Knowledge', 'Decisions', and 'Development'. The rows are labeled 'Governance', 'Technology', and 'People'. The puzzle pieces contain the following text:

- Governance:** Governance and Institutions, Policy and Legal, Financial
- Technology:** Data, Innovation, Standards
- People:** Partnerships, Capacity and Education, Communication and Engagement

Surrounding the grid are various icons representing societal, economic, and environmental factors. The bottom of the diagram is labeled 'Society • Economy • Environment'.



**UN-GGIM** | United Nations Committee of Experts on  
Global Geospatial Information Management

Working Group on  
Marine Geospatial Information

Positioning geospatial information to address global challenges



2020 AND BEYOND

SHAPING  
OUR  
FUTURE  
TOGETHER

ggim.un.org

4

### Framework for Effective Land Administration

A reference for developing, reforming, renewing, strengthening or modernizing land administration and management systems

Expert Group on Land Administration and Management  
United Nations Committee of Experts on Global Geospatial Information Management (UN-GGIM)  
June 2019

**Content:**

- EXECUTIVE SUMMARY ..... 2
- VISION, MISSION, GOALS AND REQUIREMENTS ..... 4
- Vision Statement ..... 4
- Mission ..... 4
- Goals and Requirements ..... 4
- BACKGROUND ..... 6
- Seventeen goals to transform our world ..... 6
- Global agenda and guidelines ..... 7
- Global Geospatial Information Management ..... 8
- Integrated Geospatial Information Framework ..... 9
- EFFECTIVE LAND ADMINISTRATION ..... 9
- The need for effective land administration ..... 9
- People - End poverty and hunger in all forms and ensure dignity and equality ..... 10
- Planet - Protect our planet's natural resources and climate for future generations ..... 10
- Prosperity - Ensure prosperous and fulfilling lives in harmony with nature ..... 10
- Peace - Foster peaceful, just and inclusive societies ..... 11
- Partnership - Implement the agenda through a solid global partnership ..... 11
- Effective Land Administration ..... 12
- Stakeholders ..... 12
- Using and Applying ..... 13
- NINE STRATEGIC PATHWAYS OF THE FRAMEWORK FOR EFFECTIVE LAND ADMINISTRATION 13
- Governance, Institutions and Accountability ..... 14
- Legal and Policy ..... 14
- Finance ..... 16
- Data ..... 17
- Innovation ..... 18
- Standards ..... 18
- Partnerships ..... 20
- Capacity and Education ..... 20
- Advocacy and Awareness ..... 22
- CONCLUSIONS ..... 23

United Nations Committee of Experts on  
Global Geospatial Information Management

Working Group on  
Marine Geospatial Information

Positioning geospatial information to address global challenges

2020 AND BEYOND

SHAPING OUR FUTURE TOGETHER

ggim.un.org

5

## Framework for Effective Land Administration

The nine strategic pathways of the Integrated Geospatial Information Framework (IGIF) guide FELA. All pathways are linked and overlap and address a specific objectives.

All pathways are related back to the SDGs and the IGIF, and lead to the articulation of approaches, methods and tools, specific to land administration and management, that can be used at national and sub-national level for the implementation of FELA.

United Nations Committee of Experts on  
Global Geospatial Information Management

Working Group on  
Marine Geospatial Information

Positioning geospatial information to address global challenges

2020 AND BEYOND

SHAPING OUR FUTURE TOGETHER

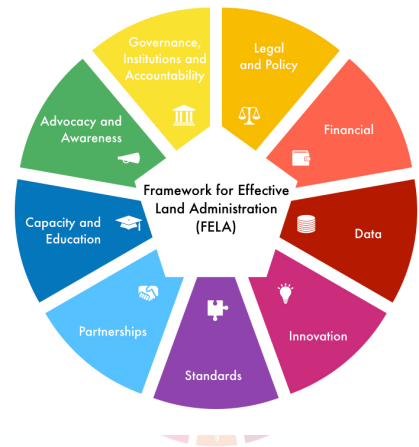
ggim.un.org

6

### Nine Pathways of the Framework for Effective Land Administration

The nine strategic pathways of the Integrated Geospatial Information Framework (IGIF) guide FELA. In this regard, the main areas of influence of the United Nations Integrated Geospatial Information Framework equally apply: governance, technology, and people. The strategic pathways are intended to guide the implementation of FELA, support the IGIF implementation more broadly, and ultimately deliver towards the achievement of the SDGs and sustainable development.

All nine pathways are linked and necessarily overlap, however, for the purpose of FELA and in accordance to the IGIF they are dealt with independently. Linkages between the nine pathways are highlighted where appropriate.



UN-GGIM

United Nations Committee of Experts on Global Geospatial Information Management

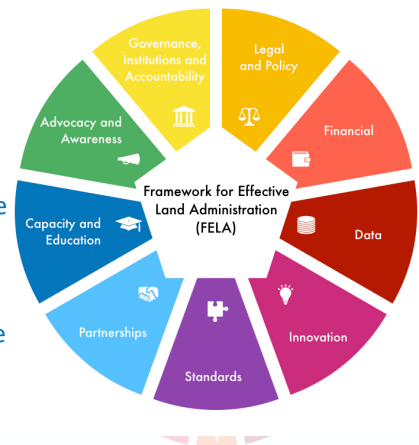
Working Group on Marine Geospatial Information

Positioning geospatial information to address global challenges  
UN75 SHAPING OUR FUTURE TOGETHER 2020 AND BEYOND ggim.un.org

### Governance, Institutions and Accountability

Land administration is a societal activity both shaping and shaped by governance, institutions, and accountability. Broadly speaking, the entirety of the SDGs focuses on the enhancement and reform of governance, institutions and associated accountabilities. IGIF identifies the themes as a standalone strategic pathway, and calls for the articulation of clear governance models, leadership, institutional structures, and a clear value proposition. These are intended as a means to strengthen multi-disciplinary and multi-sectoral participation, and a commitment to achieve an Integrated Geospatial Information Management.

FELA accepts plurality in terms of available land governance approaches, including market-based, networked, and more conventional hierarchical/institutional approaches - provided there is adherence to good governance principles. On this, increasingly networked approaches are seen to enhance multi-lateral, multi-sectoral, and multi-disciplinary collaboration – with inclusivity and transparency further supported.



UN-GGIM

United Nations Committee of Experts on Global Geospatial Information Management

Working Group on Marine Geospatial Information

Positioning geospatial information to address global challenges  
UN75 SHAPING OUR FUTURE TOGETHER 2020 AND BEYOND ggim.un.org

## Framework for Effective Land Administration (FELA)

The overarching goal is to support global policy convergence in land administration – with a view to guiding policy development and policy operationalization in Member States according to the IGIF. Effective land administration caters to all people, and must:

- ✓ Accelerate the proportion of population with tenure security;
- ✓ Develop confidence and trust, promote security, safety, peace and peace building;
- ✓ Promote efficient and vibrant land market taking into consideration aspects of land values and land development;
- ✓ Allow economic development through revenue systems that are equitable and fair;
- ✓ Contribute to smart and resilient societies;
- ✓ Cater to all circumstances, situations and people – in times of peace and prosperity, in times of stress and hardship (disaster and conflicts, migration and human displacement, poverty, food and water scarcity);
- ✓ Promote and respect the inherent rights of indigenous peoples to their lands, territories and resources and recognize traditions, customs and customary tenures; and
- ✓ Promote preparedness, resilience (with increasing climate vulnerabilities), sustainable consumption and strong institutions.



UN-GGIM

United Nations Committee of Experts on  
Global Geospatial Information Management

Working Group on  
Marine Geospatial Information

Positioning geospatial information to address global challenges



ggim.un.org

9

## Determine, Record, and Recognize land and property rights



INFORMATION MANAGEMENT

*improve advocacy, promote coherence of concepts, and translate globally agreed methods and approaches for practical implementation by governments to determine, record and disseminate information about the relationship between people and land for sustainable development*



UN-GGIM

United Nations Committee of Experts on  
Global Geospatial Information Management

Working Group on  
Marine Geospatial Information

Positioning geospatial information to address global challenges



ggim.un.org

10